



14 Mansion Point Road Grays Point NSW

6 5 4

A WELCOMING HOME

Nestled in quiet and peaceful location capturing the most beautiful water views.

A large entertaining family residence with six bedroom accommodation to suit the large family or in-laws. Marvelous large open plan living with lounge and dining, family room all taking in the spectacular water views.

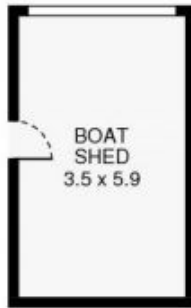
Two large alfresco terraces. Huge rumpus and billiard rooms with bar, outdoor Jacuzzi, four car lock up garage plus off street parking for a further eight cars.

On the waterfront is a two storey boat shed including entertaining, jetty with pontoon. To suit the boat owner and the perfect family setting for all water activities.

View : <https://www.burraneer.com.au/sale/nsw/sutherland/grays-point/residential/house/5719543>



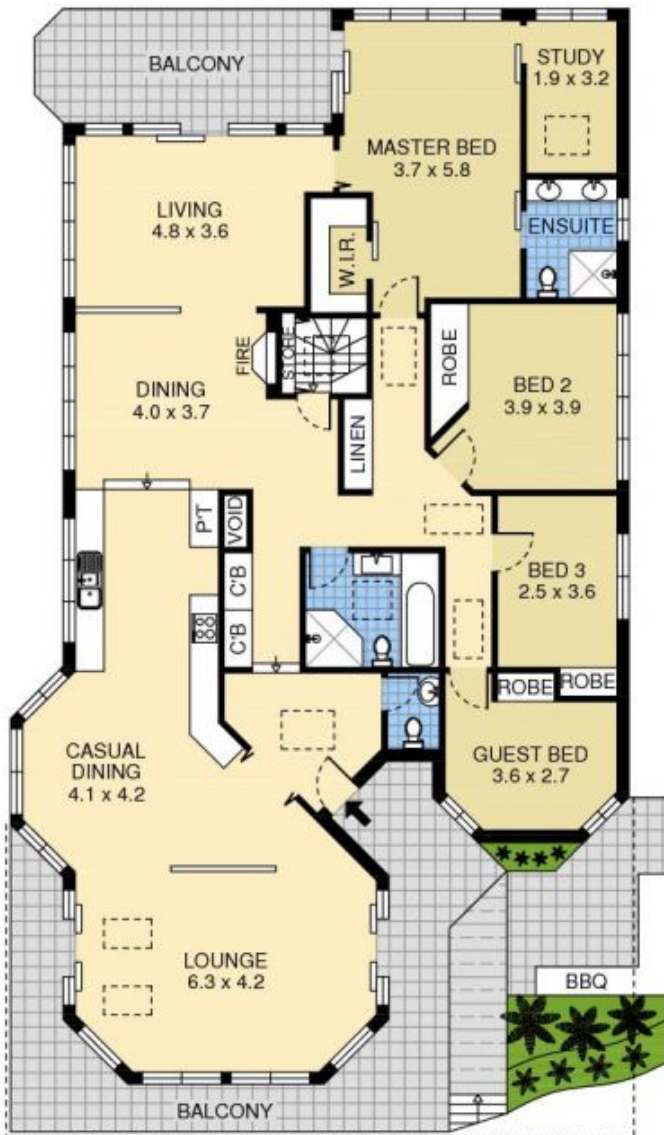
Stuart Payne
02 9523 8333



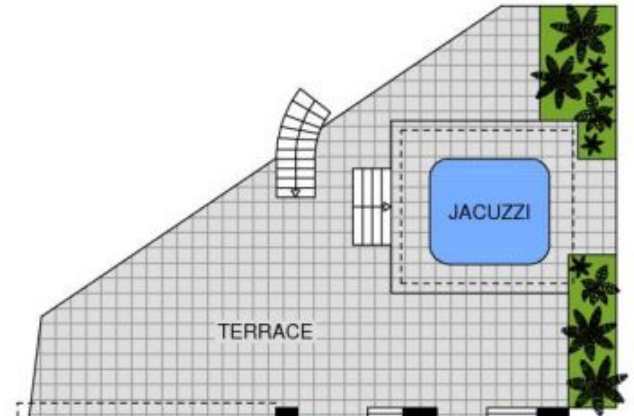
GROUND LEVEL



FIRST FLOOR



GROUND LEVEL



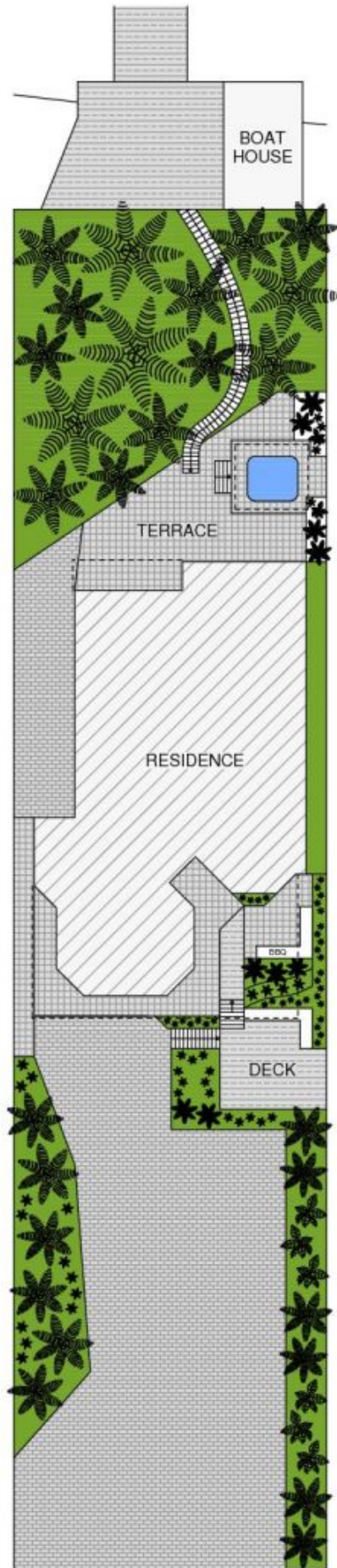
TERRACE



LOWER GROUND LEVEL

14 Mansion Point Road, Grays Point

PLEASE NOTE:
THIS PLAN HAS BEEN PROVIDED BY EMPIRE PLANS FOR
MARKETING PURPOSES ONLY. NO RELIANCE SHOULD
BE PLACED ON THIS PLAN FOR CONSTRUCTION OR
DEMOLITION PURPOSES. EMPIRE PLANS 0402 844 843



SITE PLAN

14 Mansion Point Road, Grays Point

PLEASE NOTE:
THIS PLAN HAS BEEN PROVIDED BY EMPIRE PLANS FOR
MARKETING PURPOSES ONLY. NO RELIANCE SHOULD
BE PLACED ON THIS PLAN FOR CONSTRUCTION OR
DEMOLITION PURPOSES. EMPIRE PLANS 0402 844 843

