



19 Flat Rock Road Gymea Bay NSW

3 2 2

Fabulous potential with this three bedroom, two bathroom family residence. Outdoor terrace for entertaining taking in the lovely water views.

On the waterfront is a spacious original boat house with accommodation plus very large boat storage for several craft including slipway and pontoon.

A renovators delight with unlimited potential. A very select location in which to live.

Land Size 919m².

Land Size : 919 sqm
View : <https://www.burraneer.com.au/sale/nsw/sutherland/gymea-bay/residential/house/5719537>



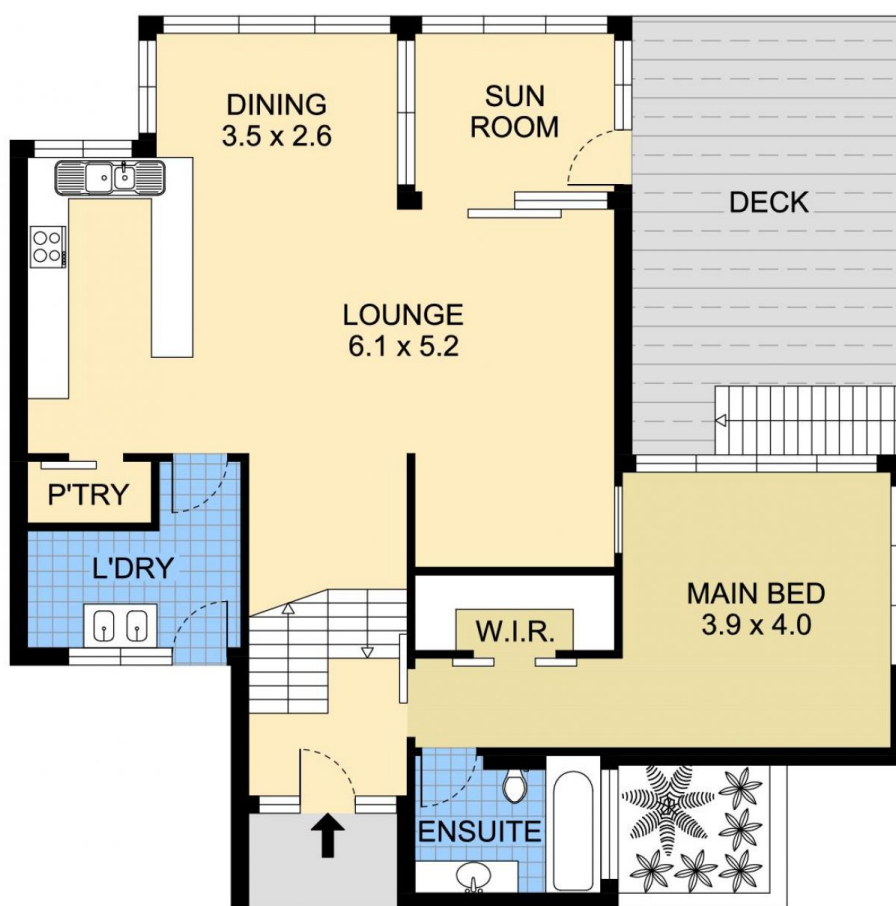
Stuart Payne
02 9523 8333



Adam Payne
02 9523 8333



FIRST FLOOR

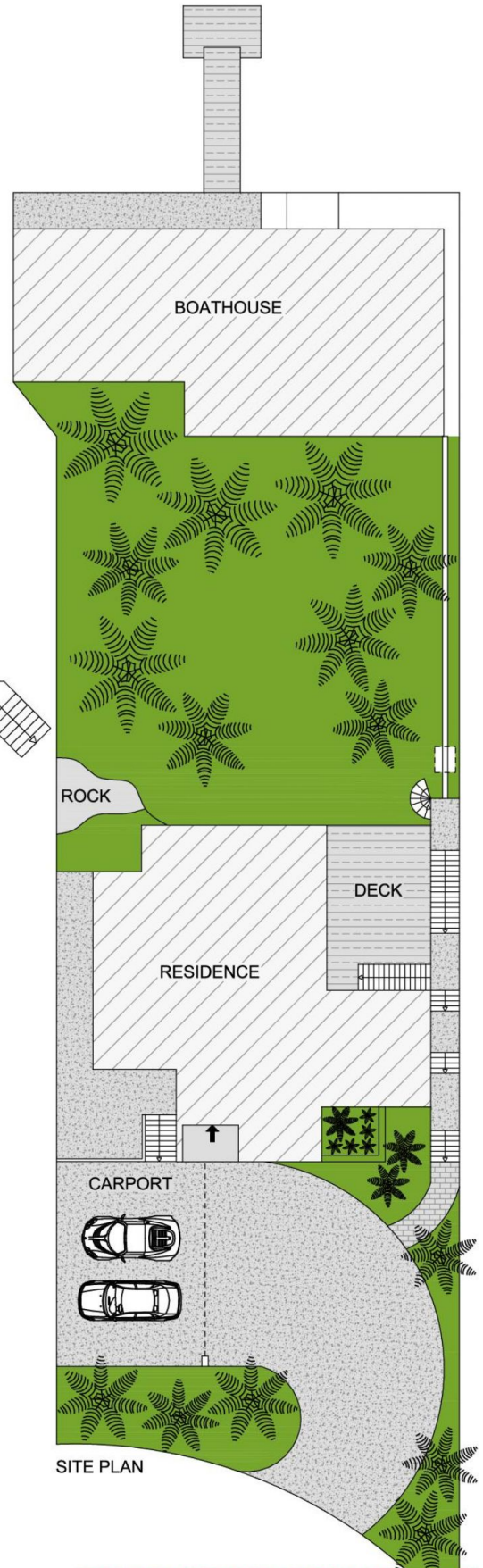
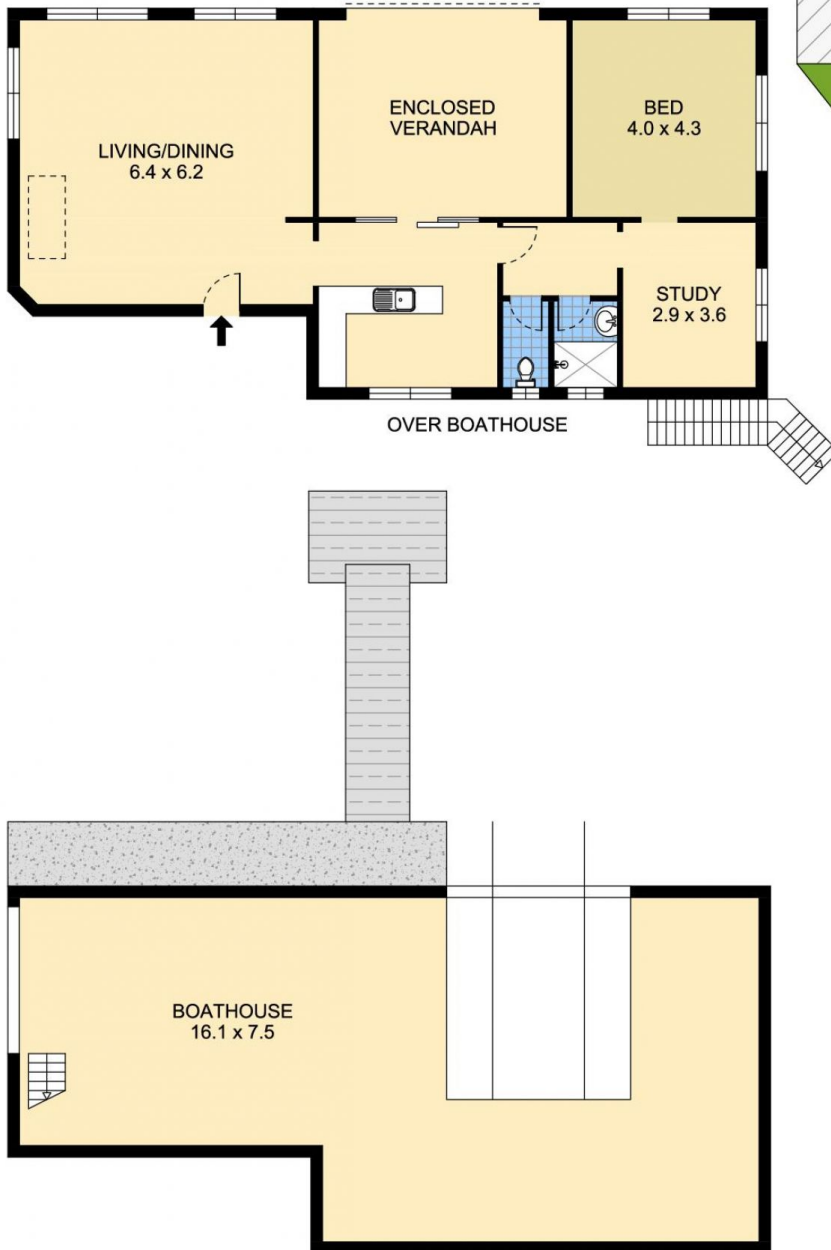


GROUND LEVEL

19 Flat Rock Road, Gymea Bay

PLEASE NOTE:
THIS PLAN HAS BEEN PROVIDED BY REALPHOTO FOR
MARKETING PURPOSES ONLY. NO RELIANCE SHOULD
BE PLACED ON THIS PLAN FOR CONSTRUCTION OR
DEMOLITION PURPOSES. REALPHOTO 0405 682 225
WWW.REALPHOTO.NET.AU





19 Flat Rock Road, GyMEA Bay

PLEASE NOTE:
THIS PLAN HAS BEEN PROVIDED BY REALPHOTO FOR
MARKETING PURPOSES ONLY. NO RELIANCE SHOULD
BE PLACED ON THIS PLAN FOR CONSTRUCTION OR
DEMOLITION PURPOSES. REALPHOTO 0405 682 225
WWW.REALPHOTO.NET.AU