



70 Ellesmere Road Gymea Bay NSW

4 🏠 3 🚿 3 🚗

This stunning property offers brilliant family living and entertaining, very easy access to its deep waterfront and is in a secluded and sought after position in Gymea Bay with perfect north aspect.

Price : \$ 2,260,000

View : <https://www.burraneer.com.au/sale/nsw/sutherland/gymea-bay/residential/house/5719468>

Offering 4 bedrooms, 3 bathrooms, stunning gourmet kitchen wrapped by spacious open plan living and separate rumpus with wet bar (could be a separate inlaw retreat if required).

An amazing home featuring a modern design with high quality fittings, bi-fold doors opening out to terraces and lawn, floor to ceiling glass to capture the sunny north aspect and water views. 3 car parking plus storeroom or workshop.

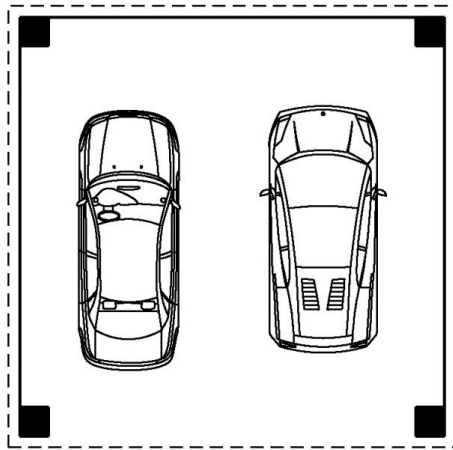
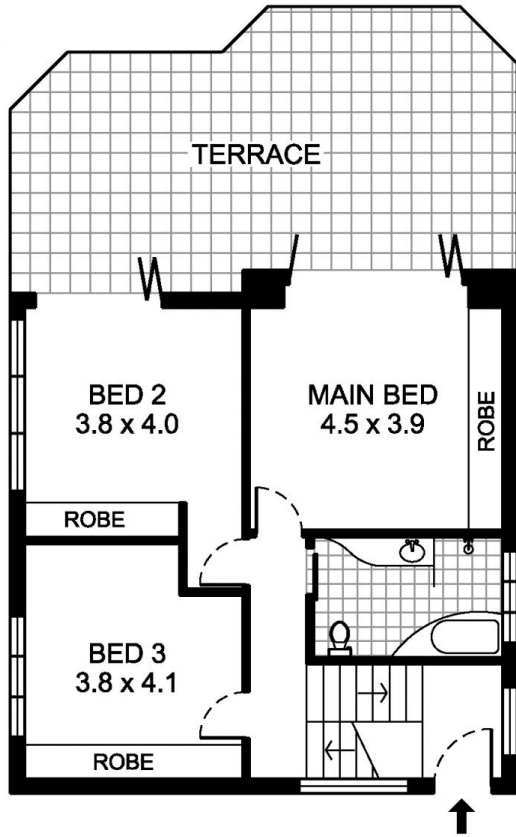


Adam Payne
02 9523 8333



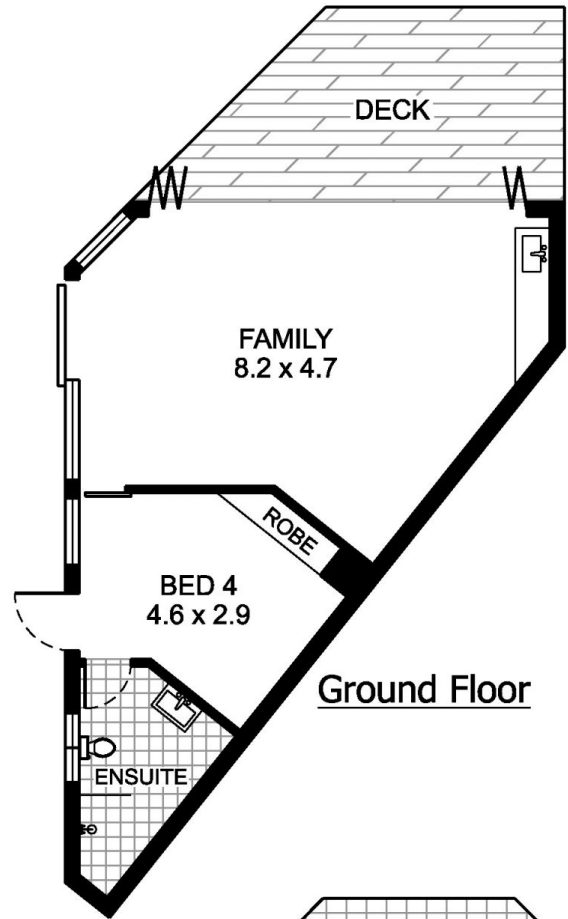
Stuart Payne
02 9523 8333

You could spend long lazy days by the waters edge with

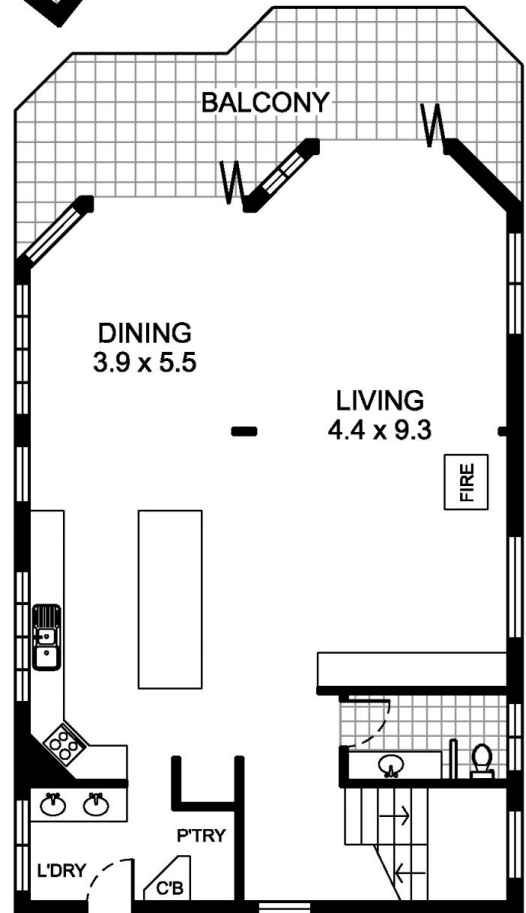


DOUBLE CARPORT
7.4 x 7.3

Second Floor



Ground Floor



First Floor

70 Ellesmere Rd, Gymea Bay

PLEASE NOTE:
THIS PLAN HAS BEEN PROVIDED BY REALPHOTO FOR
MARKETING PURPOSES ONLY. NO RELIANCE SHOULD
BE PLACED ON THIS PLAN FOR CONSTRUCTION OR
DEMOLITION PURPOSES. REALPHOTO 0405 682 225
WWW.REALPHOTO.NET.AU